

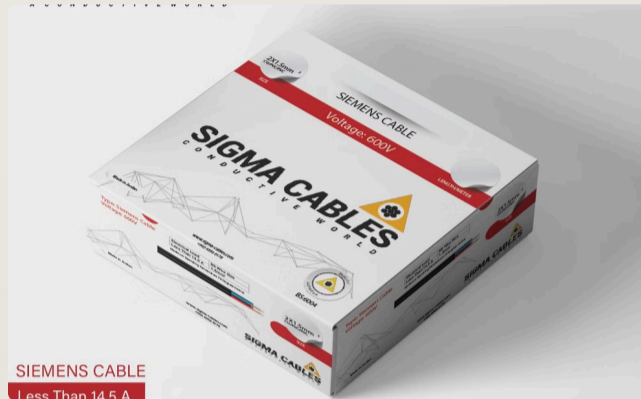


SIGMA CABLES

A C O N D U C T I V E W O R L D

Who We Are

Sigma Cables ranks among the Middle East's leading electrical cable and wire manufacturers. Founded in 2010 in Jordan, we've built our reputation on quality, reliability, and innovation.



Manufacturing Excellence

Our state-of-the-art manufacturing facility combines advanced technology with skilled professionals to produce cables that exceed customer expectations while complying with international quality standards.

Quality & Innovation

Over the past decade, Sigma Cables has become synonymous with trust and performance. We've continuously enhanced our production capabilities and integrated cutting-edge technologies to meet evolving infrastructure demands.

Powering Communities

Our core mission is delivering durable, efficient, and safe cable solutions for power distribution, infrastructure, telecommunications, and industrial automation sectors. We recognize that our cables form the critical backbone of systems powering communities, industries, and cities regionwide.

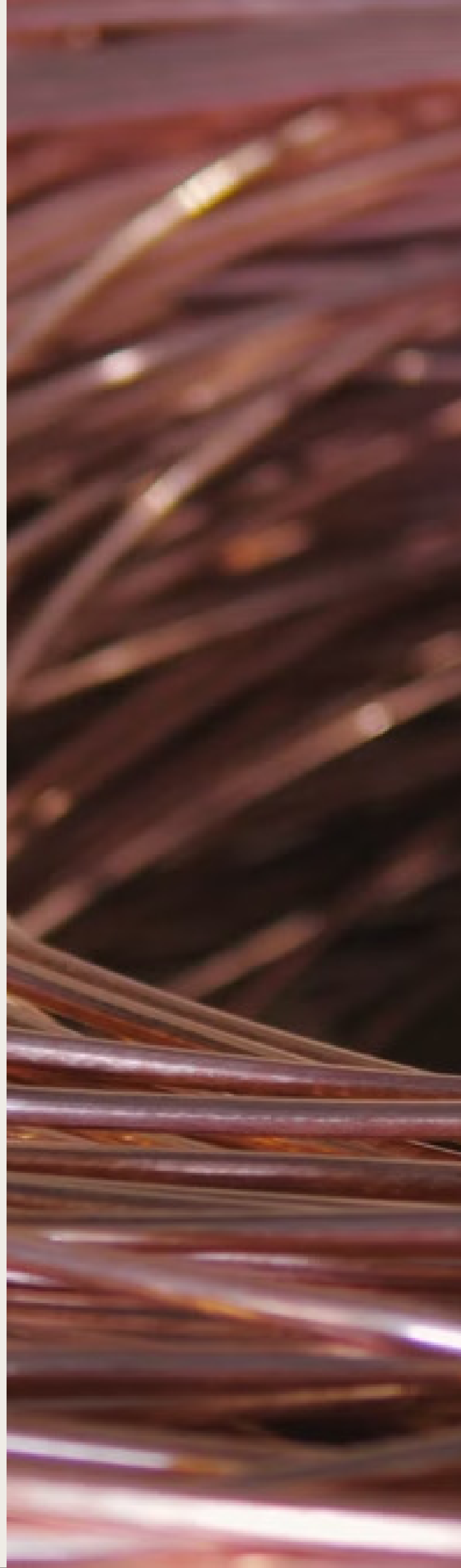
Our excellence extends beyond products to every operational aspect—from sourcing raw materials to providing customer service and technical support, a responsibility we embrace with unwavering dedication.

Our Vision

At Sigma Cables, we aim to become the undisputed leader in cable solutions across local and regional markets. Our vision rests on three pillars: innovation leadership, quality excellence, and operational sustainability. We provide more than connections—we create the vital infrastructure powering cities, driving industrial growth, and linking communities.

We maintain a forward-thinking approach, anticipating client needs and investing in technologies to meet future demands today. This strategic foresight positions us not merely as manufacturers but as solution providers addressing complex challenges in an increasingly electrified world.

Our vision is anchored in consistent quality, continuous innovation, and ethical business practices. As we expand beyond current markets, we remain committed to the personalized service and attention to detail that has distinguished our brand since inception.



Our Mission



Enabling Progress

Delivering high-performance cables and wire solutions that power energy systems, infrastructure projects, and communication networks



Advanced Technology

Investing in cutting-edge manufacturing processes to improve precision, enhance performance, and ensure safety



Sustainability Focus

Adopting environmentally responsible practices throughout our entire production chain, from sourcing to packaging

At Sigma Cables, we serve as strategic partners to industries by providing reliable cables that power critical infrastructure and energy systems. Our commitment to excellence drives investment in advanced technologies that enhance precision, performance, and safety standards across all our products.

We embrace environmental responsibility through sustainable practices in every operational phase. From responsible raw material sourcing to optimized production and eco-friendly packaging, we minimize environmental impact while delivering superior quality. Our aim is to contribute to a sustainable future through safe, efficient energy transmission solutions.

Our Core Values



At Sigma Cables, our success is built on four core values that guide every decision. Quality is paramount—we produce world-class products that exceed customer expectations through rigorous testing protocols, establishing our reputation in markets where reliability is non-negotiable.

Innovation is embedded in our organizational DNA, driving us to continuously seek new technologies and production methods to address emerging challenges. This forward-thinking approach ensures we maintain our leadership position in a competitive industry.

Transparency creates the foundation for lasting partnerships through trust, honesty, and open communication. Meanwhile, our commitment to sustainability is demonstrated through practical efforts to reduce our environmental footprint in energy use, waste management, and resource conservation across all operations.



Company History - Our Journey to Excellence

Sigma Cables has grown from a modest beginning in 2010 to become a regional leader in cable manufacturing across the Middle East. Our evolution from a small venture to a sophisticated operation demonstrates our resilience, adaptability, and commitment to growth.

Our foundation was built on a clear vision to fulfill the growing demand for quality electrical cables in Jordan and beyond. Through strategic investments in technology and talent, we established our first facility and built a reputation for excellence. Throughout our development, we've balanced unwavering quality standards with expanding capabilities and market reach.

Strategic decisions have marked each growth phase, enabling us to better serve clients and adapt to market changes. From securing international certifications to entering new markets, we've successfully navigated challenges while seizing opportunities. As we continue expanding our capacity and capabilities today, we remain guided by the same principles of quality and innovation that have defined us from the start.

Key Milestones in Our History

2010

Established in Amman, Jordan to address regional demand for quality electrical cables.



2013

Commissioned first factory with advanced machinery to enhance quality and production.

2014

Achieved ISO 9001 certification, demonstrating commitment to quality management standards.



2018

Expanded to Gulf countries and Iraq, building partnerships and increasing market presence.

2022

Upgraded to energy-efficient production lines, improving sustainability and output.



2024

Expanded power cable production for renewable energy and relocated to larger Al Tafilah facility, increasing capacity and enhancing R&D capabilities.

Each milestone represents a strategic step in our development. Our 2024 relocation to Al Tafilah marks a transformative moment, significantly increasing production capacity with cutting-edge manufacturing technologies to better serve Jordan and the Middle East's infrastructure needs.

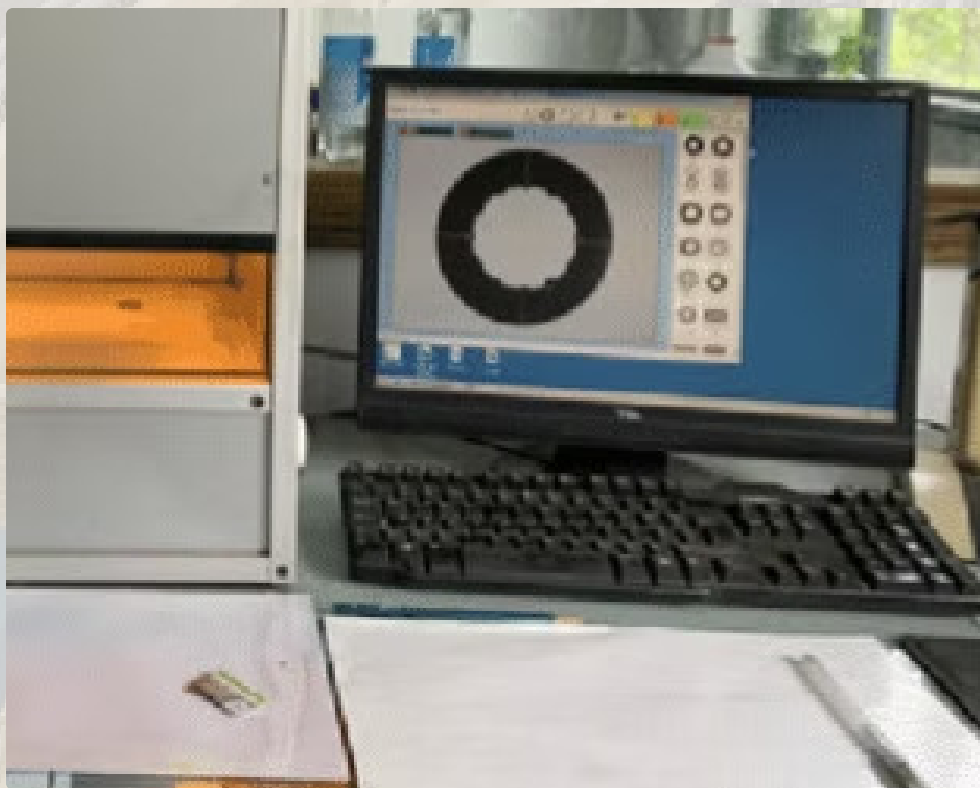
Manufacturing Capabilities & Quality

State-of-the-Art Facility

Our cutting-edge manufacturing facility in Al Tafilah, Jordan represents a significant investment in advanced technology designed to meet demanding industry standards while maximizing efficiency and quality.

The facility features fully automated production lines ensuring consistent precision, advanced testing laboratories for rigorous quality examination, and premium raw materials from leading international suppliers.

Comprehensive automation and digital systems provide real-time monitoring throughout production, minimizing human error while maximizing efficiency. This technological infrastructure enables us to deliver products that meet international standards and client-specific requirements.



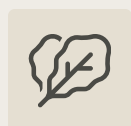
Our 2024 relocation has enhanced production capacity, streamlined logistics, and improved R&D resources—reflecting our commitment to meeting growing regional demand while maintaining the exceptional quality that defines our market reputation.

Quality Standards & Certifications



ISO 9001

Ensures consistent product excellence through comprehensive quality management systems



ISO 14001

Reflects our commitment to environmental management and sustainable manufacturing



ISO 45001

Maintains rigorous occupational health and safety standards across all facilities

Sigma Cables adheres to stringent quality control throughout our manufacturing process. Our ISO certifications demonstrate our commitment to world-class standards in quality, environmental responsibility, and workplace safety—reflected in our daily operations and business practices.

Every product undergoes comprehensive testing to verify performance and durability, including electrical conductivity, fire resistance, thermal stability, and chemical/moisture resistance tests. Our protocols frequently exceed industry requirements, ensuring maximum reliability for our customers.

Our quality assurance team maintains detailed documentation for complete traceability throughout production. This thorough approach to quality management has established Sigma Cables as a trusted provider of reliable cable solutions across demanding applications.



Products & Technical Specifications

Sigma Cables offers a comprehensive portfolio of cable solutions engineered to meet specific application requirements. Our products combine reliability and durability for both standard installations and customized projects. Through continuous research and development, we refine existing product lines while creating new solutions for emerging market needs.

Our technical team collaborates with industry partners and end-users to incorporate real-world challenges into our design and testing processes. This approach ensures our cables exceed industry standards while addressing practical application demands. For each product category, we provide detailed technical documentation including specifications, performance data, and installation guidelines.

Every Sigma Cables product undergoes rigorous quality control and performance testing, guaranteeing electrical performance, mechanical durability, and safety compliance. This commitment to quality has established our products as the preferred choice for critical infrastructure projects regionwide.

Power Cables

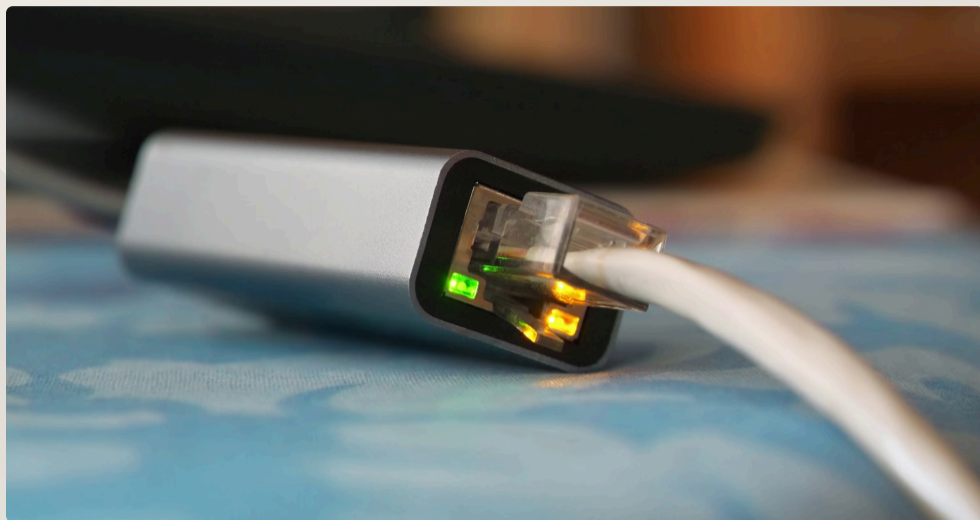
Our power cable lineup forms the foundation of our product portfolio, designed for low-voltage distribution across residential, commercial, and industrial settings. These cables deliver reliable performance while maintaining strict safety standards under challenging conditions.

Sigma power cables withstand extreme temperatures, high moisture, and prolonged UV exposure, making them suitable for both indoor applications and outdoor installations where environmental resilience is essential.



Our power cables come in multiple configurations with various conductor sizes, insulation materials, and sheathing options. This variety allows clients to select precise specifications for their particular needs, optimizing both performance and cost-efficiency. All cables comply with international standards, ensuring global compatibility.

Telecommunication Cables



Our telecommunication cables deliver high-volume data transmission with minimal signal loss across various environments. Engineered for performance over both short and long distances, they meet the rigorous demands of modern telecommunications infrastructure.

Advanced shielding technology forms the core of our design, effectively reducing signal degradation and protecting against electromagnetic interference (EMI). This is especially vital in industrial settings where cables operate near electrical equipment and other interference sources.

Manufactured to comply with global telecom standards, Sigma cables ensure seamless integration with existing network infrastructure. This strict adherence to international specifications makes them the preferred choice for telecom providers and network installers regionwide.

Cable Types	Twisted Pair, Coaxial
Data Transmission	Up to 10 Gbps
Shielding Options	UTP, FTP, STP, SFTP
Jacket Material	PVC, PE
Installation	Indoor, Outdoor, Direct Burial, Aerial

Control & Signal Cables

In today's automated industrial settings, reliable control and signal transmission is crucial. Sigma's control and signal cables deliver consistent performance in critical applications where signal integrity directly impacts system functionality and production.

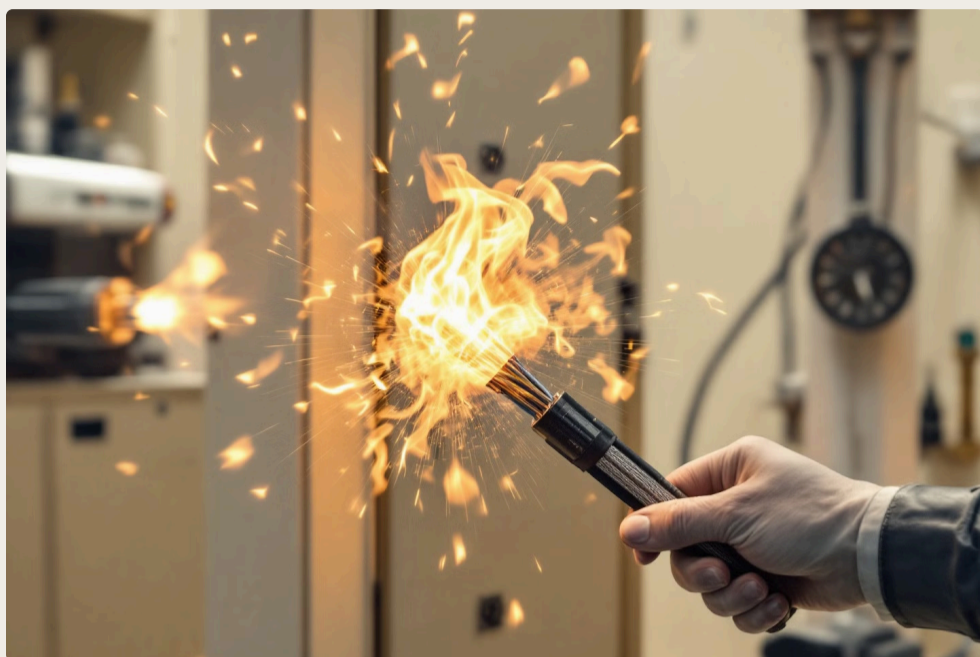
Our control cables feature advanced insulation and shielding that prevent signal noise and external interference. They maintain signal clarity even in high electrical noise environments, making them ideal for factory automation, process control, and precision applications.



Deployed in control panels, industrial signal systems, and automation installations, our cables come in various configurations to meet specific requirements. Each design is optimized for its intended use, whether for stationary installation or applications requiring flexibility. Our technical team provides expert guidance to help clients select the optimal cable for their control system needs.

Application Types	Instrumentation, Automation, Monitoring
Conductor Count	2 to 100+ cores
Shielding Types	Individual, Overall
Flexibility Options	Fixed, Flexible, Highly Flexible
Special Features	Flame Retardant

Safety & Fire-Resistant Cables



In environments where safety is paramount, Sigma's fire-resistant cables maintain functional integrity during fires, providing crucial time for emergency responses and evacuations in buildings where failure is not an option.

These cables produce minimal smoke and toxic emissions when exposed to fire, making them essential in public buildings, hospitals, and transportation systems. Their ability to function under extreme conditions is critical for maintaining emergency systems and facilitating safe evacuations.

Our fire-resistant cables meet stringent international safety standards and come in multiple configurations for different applications. Each undergoes extensive testing to verify performance under simulated emergency conditions, ensuring reliability when it matters most.

Fire Resistance	30 minutes to 3 hours
Smoke Emission	Low Smoke Zero Halogen (LSZH)
Application Areas	Emergency Systems, Exit Lighting, Alarm Circuits
Standards Compliance	IEC 60331, IEC 60332, BS 6387
Special Properties	Circuit Integrity, Reduced Flame Propagation

Markets & Clients

Sigma Cables serves diverse clients across the Middle East, providing customized solutions backed by consistent quality and technical expertise.

Client Portfolio

- Government institutions
- Private developers
- Construction companies
- Multinational corporations

Industry Sectors

- Commercial construction
- Industrial development
- Telecommunications
- Utilities & infrastructure

Value Proposition

- Technical guidance & product selection
- Installation support
- Performance optimization
- Comprehensive after-sales service

As regional infrastructure development accelerates, we've become a preferred supplier for large-scale projects requiring reliable, high-performance cable solutions. Our reputation has secured long-term relationships with key players across multiple sectors, enabling our participation in significant regional infrastructure initiatives.

This holistic approach has driven our high repeat business rate and success in securing major regional contracts. With expanding production capacity and technical capabilities, we anticipate continued growth in both our client base and market diversity.

Major Completed Projects



Al Ula Commercial Complex - Amman

Supplied low-voltage and safety cables for this landmark development's electrical distribution system. Our solutions power everything from basic lighting to advanced security systems throughout the facility.



Irbid Municipality - Irbid

Partnered with municipal authorities on urban grid expansion, providing durable power cables engineered for varied installation environments while ensuring decades of reliable performance.



Tafila Industrial City - Jordan

Delivered specialized power cables that enhanced the industrial area's electrical capacity, supporting manufacturing operations with solutions designed for demanding industrial loads and conditions.

Sigma Cables has also established a strategic partnership with **Orange Jordan**, providing advanced communication cables for multiple telecom infrastructure projects. Our customized solutions for specific technical challenges have made us a valued partner in Orange Jordan's network expansion initiatives.

Research & Development (R&D)

Innovation drives Sigma Cables' strategy and competitive edge. Our R&D department anticipates market needs and develops solutions for emerging challenges in electrical and communication infrastructure, keeping us at the forefront of Middle Eastern cable manufacturing.

Our team of qualified engineers and specialists combines theoretical knowledge with industry experience, working closely with production, quality assurance, and customer-facing teams. This integrated approach ensures our innovations address real-world challenges and deliver tangible benefits in field applications.

Investing in R&D means understanding evolving market needs, anticipating industry trends, and addressing tomorrow's challenges today. This philosophy enables us to deliver innovative solutions that help clients navigate changing technological landscapes while meeting emerging sustainability requirements and performance standards.



We employ advanced testing equipment and simulation technologies to evaluate new materials, designs, and manufacturing techniques before production implementation. This rigorous process minimizes risks while accelerating time-to-market. Our improvement focus extends to manufacturing processes, quality control, and sustainability initiatives.

Recent R&D Achievements



High-Temperature Cables

Specialized cables for industrial environments with sustained performance at elevated temperatures, using advanced insulation materials that maintain integrity under extreme thermal stress

Our high-temperature cables maintain performance at temperatures up to 250°C where standard cables fail, serving critical sectors including metallurgy, glass manufacturing, and chemical processing.



Green Manufacturing

Eco-friendly production techniques that reduce carbon emissions and resource usage while maintaining product quality and performance

Our green manufacturing uses water-based compounds, energy-efficient systems reducing power consumption by 30%, and optimized sequencing that minimizes waste—enhancing sustainability while improving cost efficiency.



Renewable Energy Solutions

Specialized cables for solar and wind energy applications, designed for unique installation environments while optimizing energy transfer efficiency

Renewable energy cables feature UV resistance, installation flexibility, and optimized conductivity to maximize energy harvest, positioning Sigma Cables as a key supplier in the Middle East's expanding renewable infrastructure market.

Sustainability & Corporate Social Responsibility (CSR)

At Sigma Cables, sustainability is a core commitment embedded in our operational philosophy and business strategy. As manufacturers, we aim to minimize environmental impact while positively contributing to our communities. This commitment guides all business decisions, from material sourcing to community engagement.

Our sustainability approach includes responsible resource management, energy efficiency, waste reduction, and continuous environmental performance improvement. We monitor our impact through regular audits and assessments, backed by ISO 14001 certification that ensures compliance with international environmental management standards.

Beyond environmental initiatives, our CSR efforts include community engagement, educational program support, and quality employment creation. We balance business success with positive social impact, creating value for all stakeholders in our ecosystem. This approach aligns with global Environmental, Social, and Governance (ESG) principles, reflecting our belief that long-term success depends on responsible corporate citizenship.



Headquarters

96 Al-Hadaeq Street
Amman 11953, Jordan

Manufacturing Facility

Al Tafilah Industrial Zone
Al Tafilah, Jordan

Get in Touch

Phone: +96265560178
Mobile: +962798243539
Email: info@sigma-cables.com
Website: www.sigma-cables.com

Our technical experts and customer service team is ready to assist with product information, specifications, and ordering. Whether you're planning a major infrastructure project or need specialized cables, contact us to discuss how Sigma Cables can support your requirements with reliable solutions.

We prioritize responsive customer service. Our technical team provides product information, application guidance, and troubleshooting assistance. We welcome inquiries from clients, partners, and stakeholders.

We're ready to serve your cable and wire needs with the quality and expertise that defines Sigma Cables.